

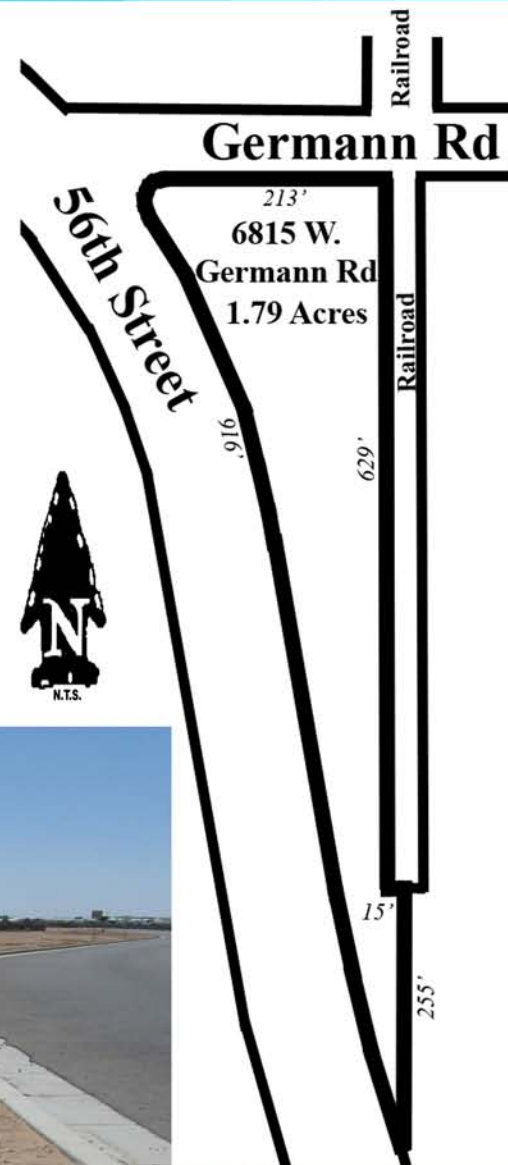


# LONE BUTTE

DEVELOPMENT CORPORATION

## PARK HIGHLIGHTS

- **Easy access to I-10/202**
- **Timely permitting process**
- **On-Site Park Management**
- **Commercially Zoned**
- **Enterprise Zone (Accelerated depreciation)**
- **Gila River Indian Community Approvals Apply**  
(No state, county or city approvals)
- **24 hr Security Patrol**



### Contact:

Lone Butte Development Corporation  
 1235 S. Akimel Lane, Box 5000  
 Chandler, Arizona 85226



*a tribal corporation owned by  
 the Gila River Indian Community*

480-899-5280

520-796-1033

[esther@lbdc.com](mailto:esther@lbdc.com)

*Visit us at [www.lonebuttedevelopment.com](http://www.lonebuttedevelopment.com)*